

Thermalito Union Elementary School District

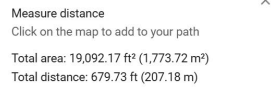
CUPCCAA Informal Bid No: MOT25-001

1. Demolition & Removal

- - Remove existing compacted base rock and surface debris as needed.
- - Excavate and off-haul excess material to accommodate new asphalt section.
- - Legally dispose of all spoils and asphalt grindings off-site.

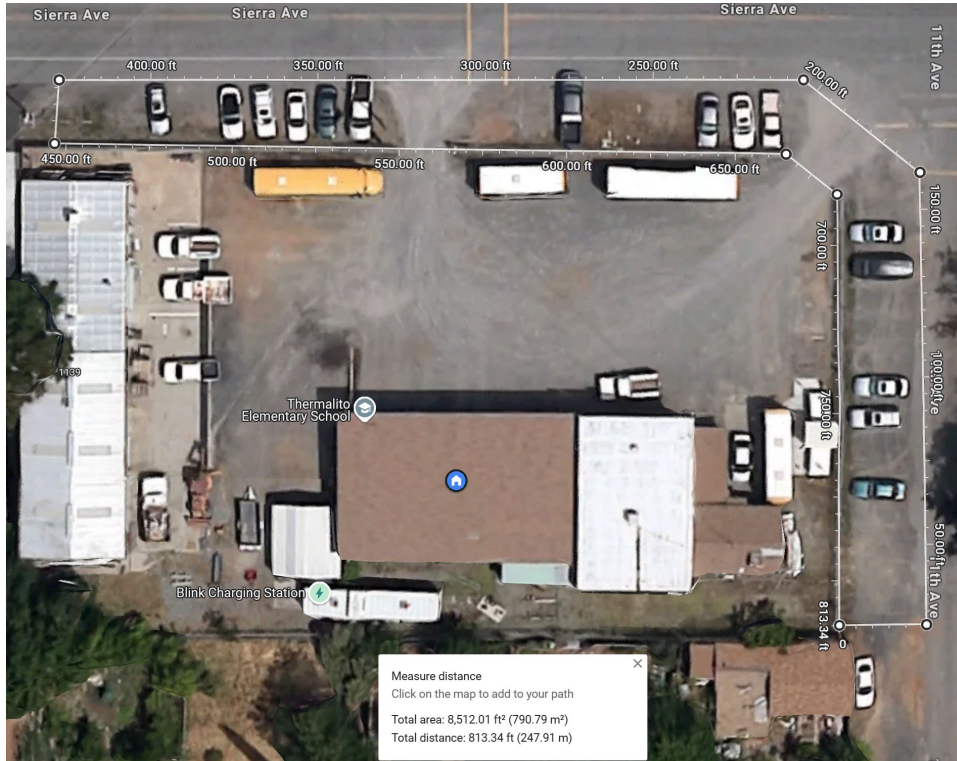
- - Grade and compact remaining or new base rock to establish a stable paving base.
- - Verify elevation tolerance and drainage slopes per district direction.
- - Apply water as needed for proper compaction (minimum 95% relative compaction).

- - Install 5 inches of Hot Mix Asphalt (HMA) in one or more lifts (base and finish).
- - Use standard Caltrans Type A or B mix per engineer/district specification.
- - Compact with steel drum roller to achieve minimum 92% compaction.
- - Edges to be tapered and neatly trimmed to interface with existing surfaces.



4. Additive Alternate - Staff Parking (Roughly 8,500 sq. ft)

- - Excavate existing soft fill or gravel surfaces as needed.
- - Grade, prepare and compact new base rock.
- - Install 3 inches of Hot Mix Asphalt (HMA).
- - Compact and finish flush with existing edge of pavement.



5. Work Limits and Area

- - Bus Barn Drive and Pad Area: ~19,000 sq. ft
- - Add Alternate Parking Area: ~8,500 sq. ft
- - Contractor to verify site limits in field.

6. Site Access and Staging

- - Work hours: 7:00 AM to 4:00 PM, Monday-Friday
- - Maintain emergency vehicle access at all times.
- - Coordinate with District staff on staging areas and laydown.

7. Quality Control and Acceptance

- - Subgrade and asphalt compaction to be verified with compaction tests upon request.
- - Finished paving shall be free of puddling, cracking, segregation, and roller marks.

8. Applicable Standards

- - California Building Code (2022)

- - Caltrans Standard Specifications (latest edition)
- - Americans with Disabilities Act (ADA) compliance
- - Local city/county/street requirements